



# Installation Guide for Fiserv\_RangerForSmartSourceEdge\_v4.1.18.1- 2.0.3.0

Summer 2014



© 2014 Fiserv, Inc. or its affiliates. All rights reserved. This work is confidential and its use is strictly limited. Use is permitted only in accordance with the terms of the agreement under which it was furnished. Any other use, duplication, or dissemination without the prior written consent of Fiserv, Inc. or its affiliates is strictly prohibited. The information contained herein is subject to change without notice. Except as specified by the agreement under which the materials are furnished, Fiserv, Inc. and its affiliates do not accept any liabilities with respect to the information contained herein and is not responsible for any direct, indirect, special, consequential or exemplary damages resulting from the use of this information. No warranties, either express or implied, are granted or extended by this document.

<http://www.fiserv.com>

Fiserv is a registered trademark of Fiserv, Inc.

Other brands and their products are trademarks or registered trademarks of their respective holders and should be noted as such.

**You must be logged into Windows as an ADMINISTRATOR in order for the installation to work properly.**

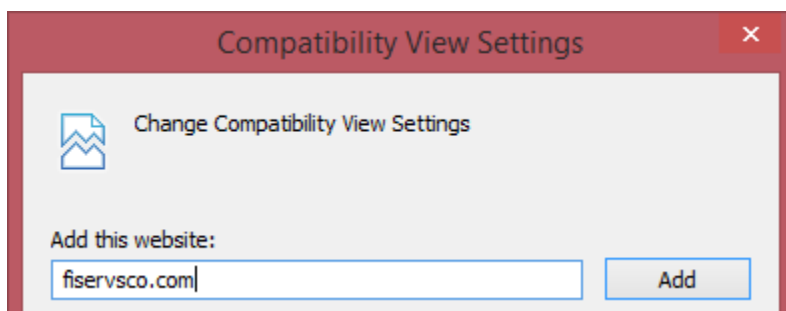
Additionally after installation and while still logged into as an ADMINISTRATOR, you must log into SCO and scan one(1) item to view an image and get all the of the ActiveX controls installed correctly.

This lists all the features of the executable. They are as follows:

- Checks for certified version of OS for SCO, which includes Windows Vista, Windows 7, and Windows 8
  - For Windows Vista, 7, and 8 both 64 and 32-bit versions of the OS are supported. SCO is designed for the standard version of Internet Explorer, NOT 64-BIT.
- Fiserv's Bomgar Support Portal icon on the desktop, which will enable users to establish a support session with an available Fiserv support representative. Please note that if internet access to <http://ipsupport.fiserv.com> on ports 80 and 443 are blocked, then this will not work.
- Ranger for Burroughs SmartSource Edge.
- Will copy over Fiserv preconfigured scanner setting files.
- Will modify NFTS permissions on Silver Bullet Technology related directories.
- Disables UAC if running Windows Vista, 7, or 8. –Note: requires reboot
- Disables USB Root Hub power-save feature. –Note: requires reboot
- Makes necessary changes in registry for Trusted Sites and ActiveX controls for all users.
- Reboot of the workstation, in which you can close safely from the automation if you want to reboot later.

**NOTE:** If you are running Internet Explorer 9 or above you will need to add the site "fiservsco.com" to the Compatibility view list. To do so:

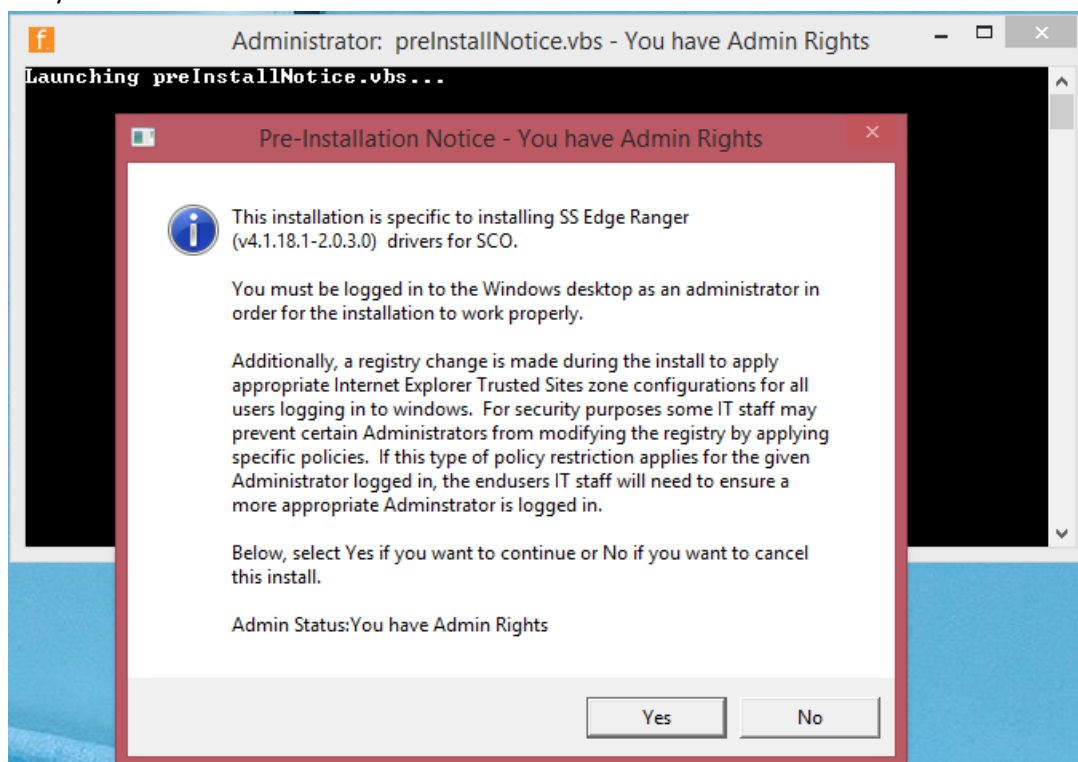
1. Inside Internet Explorer go to "Tools", if that is not visible strike the "alt" key and the tool bar should appear.
2. Go to Compatibility View Settings.
3. Type in fiservsco.com into the input field and click "add".



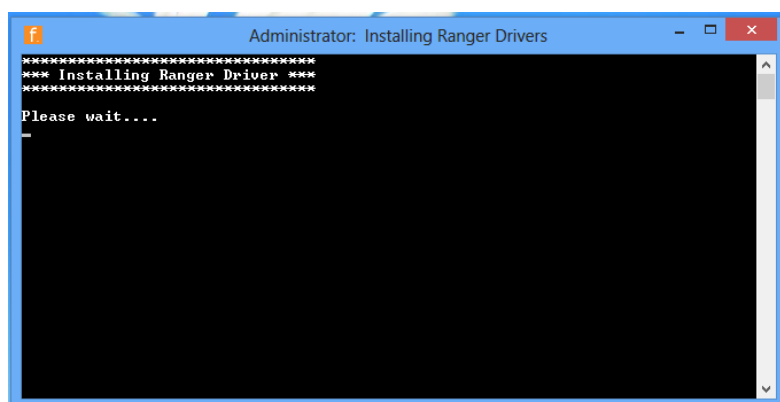
1. Double-click on Fiserv\_RangerForSmartSourceEdge\_v4.1.18.1-2.0.3.0.exe.



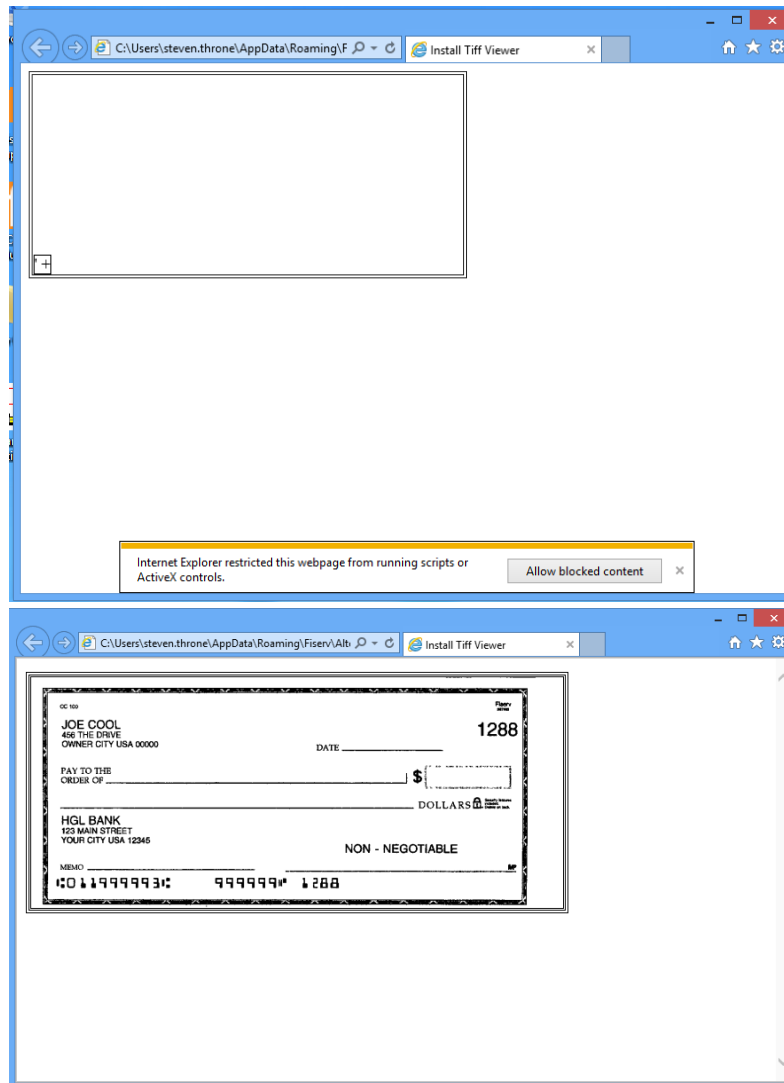
2. The installation will detect if the current Windows profile is an ADMINISTRATOR, if so it will tell you and click “Yes”.



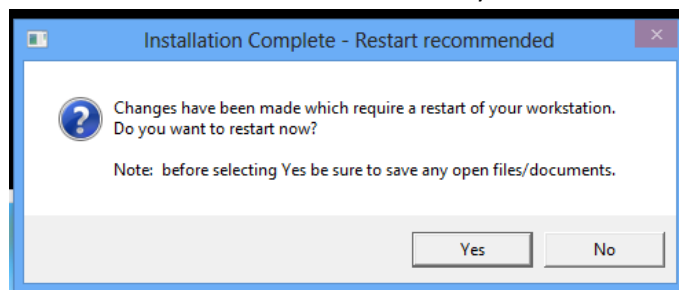
3. From there it will continue to install the drivers and different components.



4. An Internet Explorer window will automatically open. Click “Allow Blocked Content”, this will allow Alternatiff to run and for the images to be viewed.



5. When finished it will prompt you to restart the machine. If that allowed click “yes”, to restart later click “No”. Once restarted you can then connect the scanner to the PC.



6. Once the computer has been restarted and the scanner connected go to Start Menu -> All Programs -> Silver Bullet Technology and launch RangerFlex. When started place a test document into the scanner and click "Start Scanning". If you can view the front and rear images, and the MICR information then you can exit this application.
7. Then you are now able to log into SCO with your credentials and preform a test deposit.